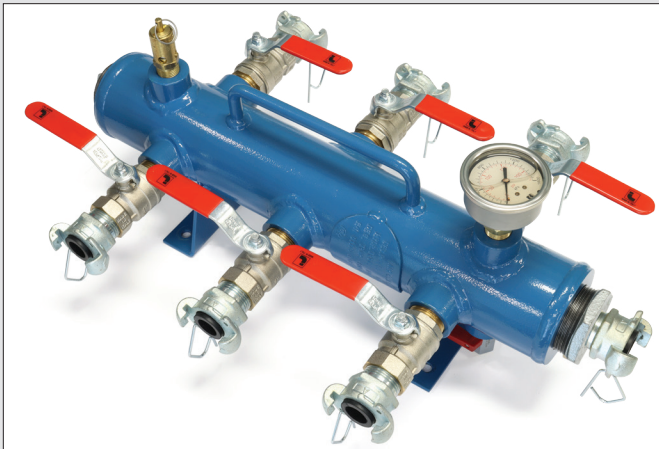
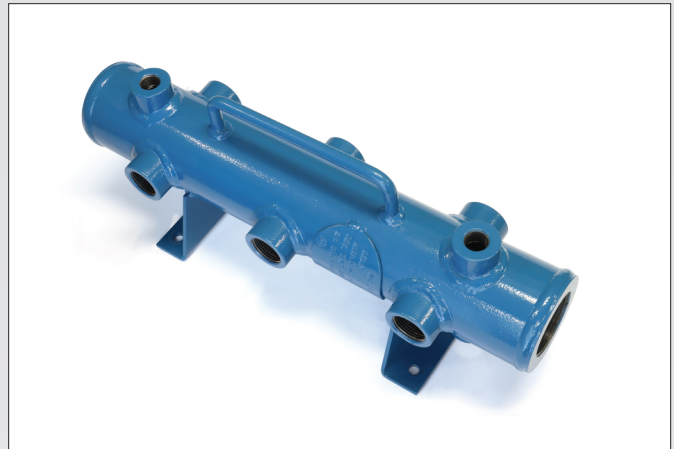


Express Tank™ Compressed Air Manifold

The Express Tank manifold provides a convenient method of distributing high flow compressed air to as many as seven different pneumatic applications simultaneously. It is cost effective, easily carried by one person, and can be rapidly deployed for either temporary or permanent use. Available off-the-shelf already powder-coated and packed ready for dispatch either as a bare manifold or together with a matching accessory kit supplied loose.



Manifold with 11 bar Accessory Kit



Bare Manifold

Manifold Specifications

Product Code	Volume	Design Pressure	Inlet & Utility Ports	Outlet Ports	Gauge, Drain & Safety Ports	Overall Dimensions			Weight
	Litres	kPa [bar]	Qty × Size	Qty × Size	Qty × Size	L mm	W mm	H mm	kg
EU M6-3-16-AS	3	1,600 [16]	2 × 2 inch	6 × 1 inch	3 × 1/2 inch	500	140	205	10

Standard Scope of Supply: The manifold is supplied bare without fittings.
Compressed Air or Nitrogen Handling: 0°C ~ 200°C.
Fluid Dynamics Optimisation: Low resistance, high flow design.

Duty: Stationary applications only while pressurised.
Sockets: BSPT (British Standard Pipe Taper).
Material: Carbon steel.

Features and Benefits

- Designed and manufactured in accordance with Australian Standard AS 1210 *Pressure Equipment*.
- Work Health and Safety Regulations compliant for use in all Australian States and Territories.
- Hazard Level “E” rating per AS 4343 denotes a negligible hazard with minimal safety risk.
- External surface abrasive blast cleaned and then powder coated in Azure Blue (RAL 5009) colour.
- Ergonomic fixed carrying handle for ease of portability.
- Sturdy mounting feet for free-standing relocatable or bolted-down fixed applications.

Accessories

WH&S regulations stipulate that each manifold must be fitted with a safety valve, pressure gauge and drain valve. These items can be purchased in either of two accessory kits together with the most commonly used outlet valves and Minsup® claw couplings.



11 bar Accessory Kit

Accessory Kit Specifications

Product Code	Safety Valve		Pressure Gauge		Drain Valve	Outlet Valves	Minsup® Claw Couplings
	Pressure	Flow Rate	Range	Dial Dia.			
	kPa [bar]	m³/min	kPa	mm	Size	Qty × Size	Qty × Type
GM EU-M6-3-11-CK	1,100 [11]	8.30	1,600	63	1/2 inch	6 × 1 inch	7 × A
GM EU-M6-3-14-CK	1,400 [14]	10.4	2,500	63	1/2 inch	6 × 1 inch	7 × A

- Accessory kit components are supplied loose for DIY assembly.
- A safety locking pin is supplied with each coupling as standard.
- Compressed air or nitrogen temperature 0°C ~ 90°C.
- Individual safety valve or pressure gauge certification is available as an option.